

## **Bellus**

The ceramic slate roof tile  
for contemporary roofs

## Bellus, the ceramic slate roof tile for contemporary roofs

Wienerberger is introducing the lightest and thinnest ceramic slate that is currently on the market: Bellus. This is the ideal Koramic product for replacing old slates and roof tiles. And these ceramic slates also offer unmistakable added value for new construction projects. Thanks to their slender, contemporary form and the accessory fittings, a roof that is covered in Bellus ceramic tiles has clean lines and a contemporary look.

### LIGHTWEIGHT - IDEAL FOR RENOVATIONS

Because they are so lightweight, Bellus ceramic roof tiles are ideal for renovation work. Reinforcement of the roof structure is often not required when old roof tiles or slates are being replaced.

### CONTEMPORARY

The slender lines of Bellus make it the perfect choice for both modern new construction work and renovations. Its thinner tail and the modified width of the head mean that a roof that is finished with ceramic Bellus slates from Koramic seems to fit together smoothly. Ceramic accessories are also available to make sure that the finishing and details can be done cleanly, reinforcing the architectural aspects.

### EFFECTIVE

Ridge tiles are available with two different angles, suitable for roof pitches of 27° to 50°.

### LASTING BEAUTY

Bellus ceramic tiles retain their colour thanks to the engobe process used, which adds a fine, matt layer onto the clay during firing. The aesthetic result lasts longer than a coated finish.

### ECONOMICAL

Bellus tiles have a continuous lip for hanging them in place. This means that it is not necessary to fix every single ceramic slate in place, which makes fitting them easier and quicker. You must of course still allow for the applicable norms and standards for attaching them.

### ECOLOGICALLY SOUND

Bellus ceramic slates are locally produced using natural, recyclable raw materials obtained in the area. Transport is kept to a minimum. Bellus tiles therefore score well in the lifecycle analysis, as proved by the fact that they meet the very strict demands of the 'natureplus' environmental label. Wienerberger is actually the only manufacturer in Belgium that has been awarded this prestigious environmental certificate for roofing materials. The label is a form of international recognition that is reserved for healthy and ecologically sound building materials.



For both new building and renovation

UV-resistant and therefore colourfast

Removable and re-usable

Resistant to scraping

Ultra-thin

Dimensional stability

Flat, contemporary look

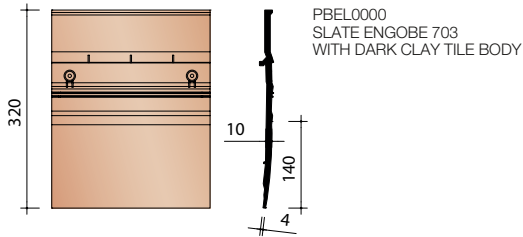
30 year warranty  
on frost resistance

Durable material with long life-span

Ceramic breathable skin



### Extruded ceramic roof slate with continuous nib



Batten spacing:	± 140 mm [EN 1024]
Effective cover width:	± 255 mm [EN 1024]
Tiles per sqm:	± 28
Minimum pitch with roof underlay	
Fleece or Fleece plus:	27°
Weight per sqm:	± 46 kg/sqm
Flexural strength:	> 600 N [EN539-1]
Impermeability:	≤ 0.5 cm³/m².d [EN 539-2]
Frost resistance:	Frost resistant [EN 539-2]
Laying:	With broken bond, preferably nailed with a copper rivet

- BENOR and KOMO quality mark
- Based on EN 1304 requirements, meets French and German standards

Our clay tiles meet the European production standard EN 1304 which allows them to get the Belgian BENOR quality certification. This quality mark guarantees aspect, format, dimensional stability and frost resistance of our tiles. Moreover, the ISO 9001 certificate confirms the constant implementation of a meticulous quality assurance system at all stages (product development, production, sales and marketing). On this basis, Koramic is able to provide a 30-year warranty on frost resistance of all Koramic tile models and clay fittings.

This exceptionally long and wide warranty includes both free delivery and installation expenditures of tiles to be replaced.



## 2 types of ridges 30° and 45°: 4 pcs/rm

The angular ridge without interlocking is available in 2 angles, suitable for roof pitches of 27° to 50°. The width of the ridge header tiles is perfectly matched to the width of the ceramic slates, so that the roof and ridge blend smoothly together. The ribs underneath provide perfect ventilation.



Angular ridge 30°  
P0002801

Angular ridge 45°  
P0002802



## 2 types of end plates for ridges of 30° and 45°

The end plates allow a tight finishing of the end of the ridges.



End plate for angular ridge 45°  
P0002842

End plate for angular ridge 30°  
P0002841



## Quick-Fix



Colour: brown-black  
Width: 280 mm  
Length: 5 m

40 stainless screws 4.5 x 80 mm inclusive

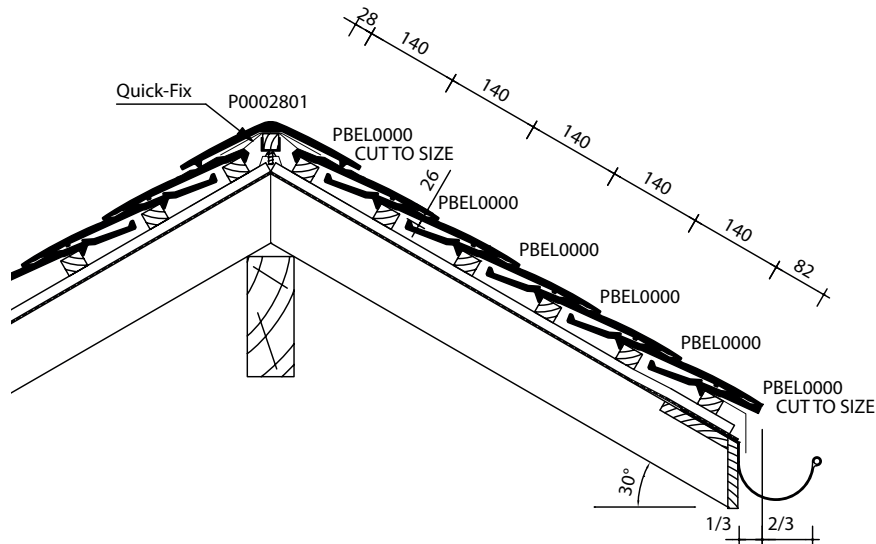
Ventilating under-ridge applicable  
under the angular ridges  
without interlocking



Angular ridge 45° in combination with Quick-Fix

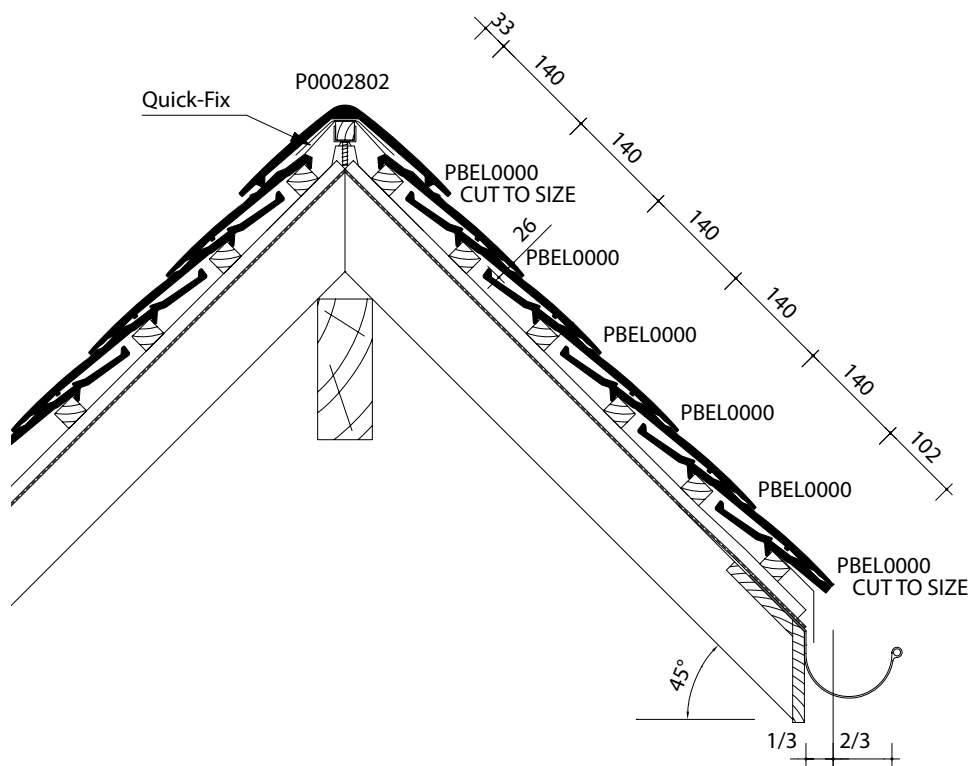
### Longitudinal section of roof at ridge 30°

The width of the batten must not exceed 38 mm



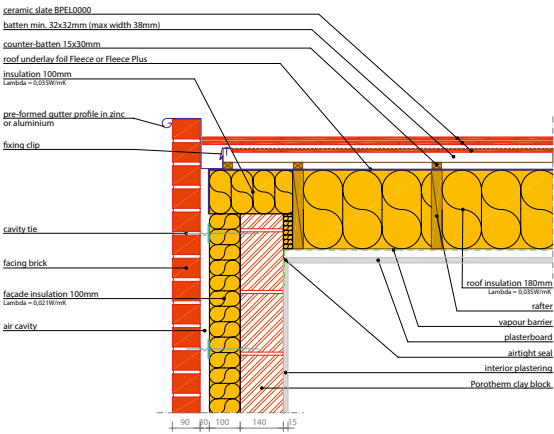
### Longitudinal section of roof at ridge 45°

The width of the batten must not exceed 38 mm

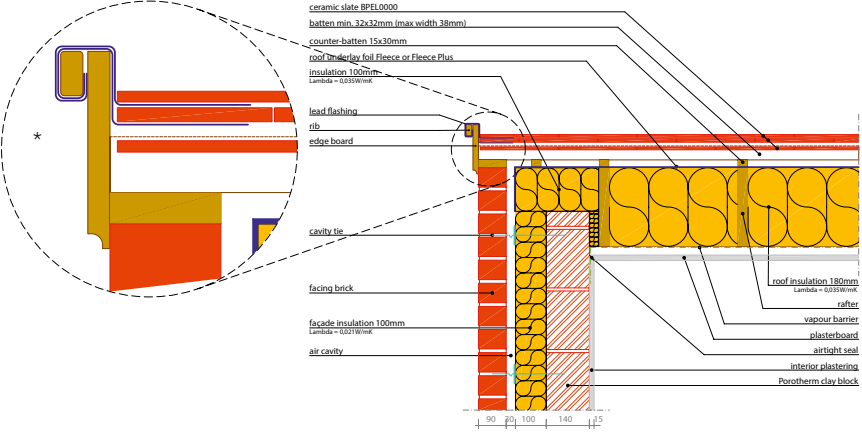


When reinforcing battens are used where two tile laths meet at a truss, you should allow for the fact that the Bellus tile protrudes between the tile laths. The reinforcing batten must be at least 15 mm lower than the height of the tile laths being used.

Possible Bellus roof verge trim with box gutter

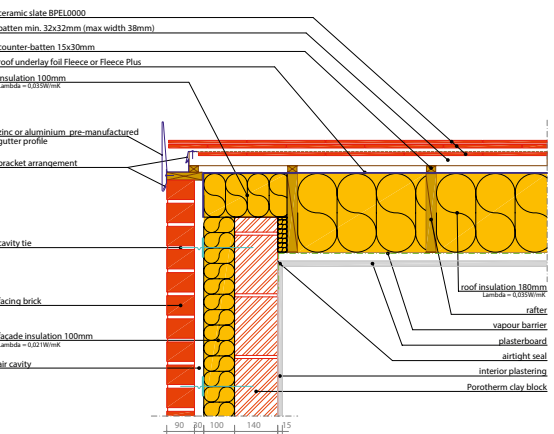


Finishing Bellus tiles up against an edge board with a frame rib

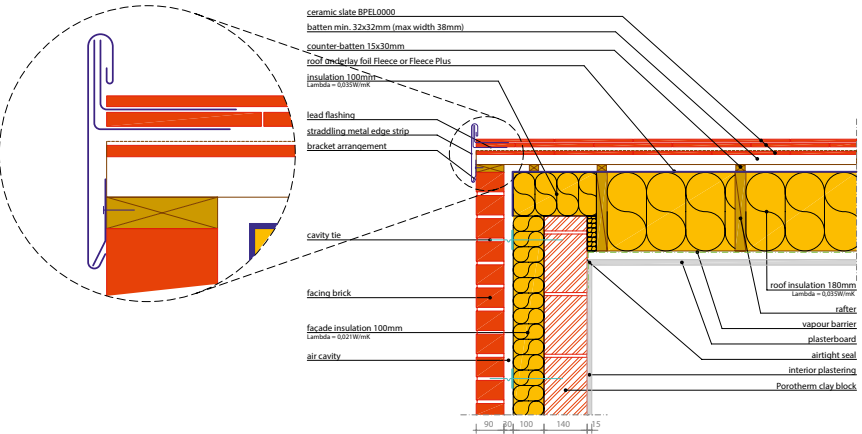


\* To finish the lead flashing neatly and smoothly between the slates, the two contact lips at the top of the slate can easily be removed.

Possible Bellus roof verge trim with box gutter



Finishing a Bellus roof edge up against a straddling metal edge strip



Wienerberger jest wiodącym producentem ceramicznych materiałów budowlanych na świecie. Na rynku polskim obecny od prawie 20 lat, jest krajowym liderem wśród producentów materiałów ceramicznych, oferując cegły konstrukcyjne i stropy Porotherm, dachówki ceramiczne i niezbędne akcesoria Koramic oraz cegły klinkierowe Terca. Firma dostarcza kompleksowe rozwiązania do budowy domu, łącząc innowacyjną technologię produkcji z tradycyjnym, docenianym przez klientów materiałem budowlanym – ceramiką.



WCB, wrzesień 2014

М8 Правильный дом  
официальный представитель Wienerberger в РБ  
220003, г. Минск, ул. Брикета 27  
T: + 375 (17) 239 09 90, (29) 313 88 88, (33) 313 88 88  
F: + 375 (17) 239 09 88  
[www.pd.by](http://www.pd.by)

  
**Wienerberger**  
Building Material Solutions